








Sellos de cable Roxtec HD

Dispositivos de paso de cable de alta densidad con marco 316L.

Los pasamuros Roxtec HD 32 son dispositivos de entrada de cables para entornos severos y peligrosos que admiten hasta 32 cables por abertura. Están disponibles en tres tamaños distintos. El sello para cables tiene un marco de acero inoxidable 316L y módulos de sellado que se pueden adaptar a diferentes tamaños de cable.



-  Resistente a roedores
-  Resistente a la corrosión
-  Ligero
-  Eficiencia de área
-  Permite cables preacabados

Características del producto



IP/UL NEMA

Estructura de instalación



Amarios
envolventes
&
prefabricad
os


Tipo de montaje



Atornilladura

Calificaciones y certificados

Estanquidad

-  IP 66/67, UL/NEMA 4,4X,12,13

Dimensiones del marco

mm/kg

Las variantes de marcos que figuran a continuación son una selección limitada. Para ver la gama completa de marcos y configuraciones, visite [roxtec.com](https://www.roxtec.com).

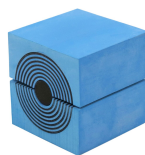
Título	Aperturas de marcos	Espacio útil de sellado	Dimensiones externas WxHxD	Dimensiones de abertura w x h	Peso	N.º de art.
HD 16 FRAME ASSEMBLY AISI 316	1	40 x 160	83.8 x 236 x 60	64(+1/-0.5) x 216(+1/-0.5)	1.6	193084
HD 32 FRAME ASSEMBLY AISI316	2	40 x 160	130 x 236 x 60	110(+1/-0.5) x 216(+1/-0.5)	2.3	109238

Datos de los componentes de sellado

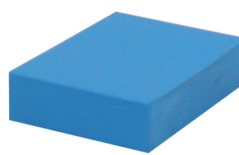
Componentes de sellado



Lubricante Roxtec



Módulo HD con Multidiameter™



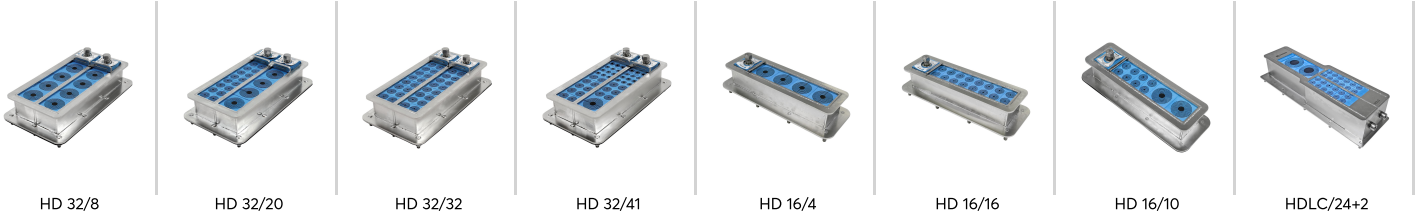
Módulo de compensación sólido HD

Para obtener información detallada, visite [roxtec.com](https://www.roxtec.com).



Kits de sellos preconfigurados

mm/kg



Título	Configuración	Dimensiones externas WxHxD	Dimensiones de abertura w x h	Peso	N.º de art.
HD 32/8	8x (9.5-31.5)	130 x 236 x 60	110(+1/-0.5) x 216(+1/-0.5)	3.3	112276
HD 32/20	16x (3.5-15.5), 4x (9.5-31.5)	130 x 236 x 60	110(+1/-0.5) x 216(+1/-0.5)	3.3	112278
HD 32/32	32x (3.5-15.5)	130 x 236 x 60	110(+1/-0.5) x 216(+1/-0.5)	3.4	112279
HD 32/41	1x (9.5-31.5), 16x (3.5-15.5), 24x (3.0-9.5)	130 x 236 x 60	110(+1/-0.5) x 216(+1/-0.5)	3.3	112280
HD 16/4	4x (9.5-31.5)	83.8 x 236 x 60	64(+1/-0.5) x 216(+1/-0.5)	2	193101
HD 16/16	16x (3.5-15.5)	83.8 x 236 x 60	64(+1/-0.5) x 216(+1/-0.5)	1.9	193100
HD 16/10	2x (9.5-31.5), 8x (3.5-15.5)	83.8 x 236 x 60	64(+1/-0.5) x 216(+1/-0.5)	1.9	198297
HDLC/24+2	2x (24.0-54.0), 24x (3.5-16.5)	378 x 120 x 94	366(+1/-1) x 108(+1/-1)	6.2	173277

The product information provided by Roxtec does not release the purchaser of the Roxtec system, or part thereof, from the obligation to independently determine the suitability of the products for the intended process, installation and/or use.

Roxtec gives no guarantee for the Roxtec system or any part thereof and assumes no liability for any loss or damage whatsoever, whether direct, indirect, consequential, loss of profit or otherwise, occurred or caused by the Roxtec systems or installations containing components not manufactured by an authorized manufacturer and/or occurred or caused by the use of the Roxtec system in a manner or for an application other than for which the Roxtec system was designed or intended.

Roxtec expressly excludes any implied warranties of merchantability and fitness for a particular purpose and all other express or implied representations and warranties provided by statute or common law. User determines suitability of the Roxtec system for intended use and assumes all risk and liability in connection therewith. In no event shall Roxtec be liable for indirect, consequential, punitive, special, exemplary or incidental damages or losses.

The Roxtec products are offered and sold in accordance with the conditions of the Roxtec General Terms of Sales. The latest version of the Roxtec General Terms of Sales can be downloaded from <https://www.roxtec.com/en/about-us/about-roxtec/general-terms-of-sales/>

We reserve the right to make changes to the product and technical information without further notice. Any errors in print or entry are no claims for indemnity. The content of this publication is the property of Roxtec International AB and is protected by copyright.

This document was generated on: 2024-04-16